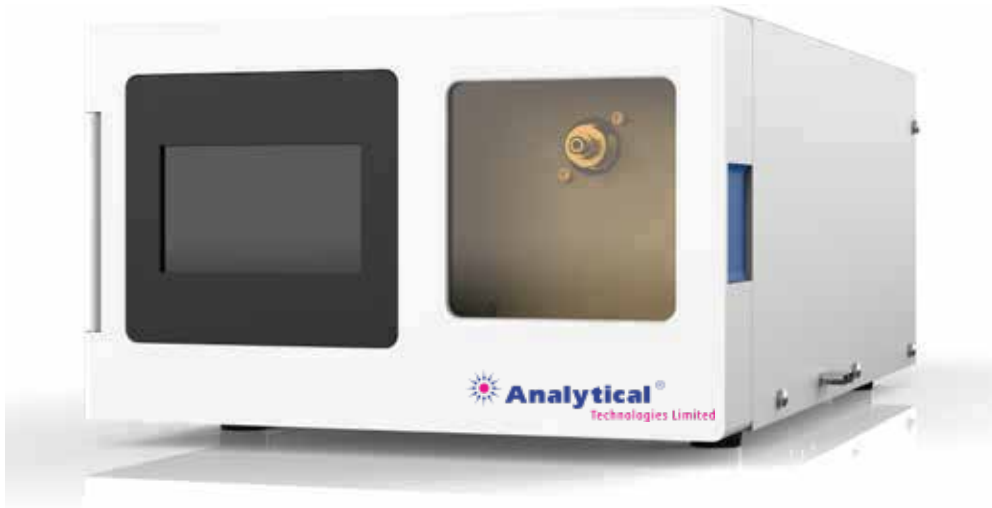


CAD-3000series

Charged Aerosol Detector(Electro spray Detector)



EPCC / PRODUCTS / APPLICATION / SOFTWARE / ACCESSORIES / CONSUMABLES / SERVICES

Analytical Technologies Limited

An ISO 9001 Certified Company

www.analyticalgroup.net

Herbal medicines and patent medicine are unique. Their main ingredient are natural products, most of which do not absorb ultraviolet light and difficult to detect using ultraviolet detector. Analytical Technologies limited focuses on the separation and analysis of herbal medicine and natural products. In order to meet the analysis of products without ultraviolet absorption. It has launched CAD-3000 series/ Charged Aerosol Detector (Electrospray Detector) better different samples. It can well replace imported instruments, has low cost and convenient operation, and is an ideal choice for units engaged in the separation and analysis of medicine, natural products and antibiotic.

INSTRUMENT FEATURE

1. Gas flow, pressure and temperature are fully electronically displayed and fully computer controlled;
2. Use stainless steel evaporation pipeline, which is strong and not easy to damage;
3. Gas flow and temperature adjustment have automatic correction function, which is convenient for debugging and maintenance;
4. Equipped with chromatography workstation software, can be used with any other HPLC system;
5. Mobile phase atomization, evaporation and ionization can measure thermally unstable components, non-volatile and semi-volatile compounds;
6. The nozzle has been specially treated, so it does not need to be cleaned and is less blocked, which is very convenient for users;
7. It can be used in parallel or in series with UV detector and differential refractive index detector for separation of natural products;
8. A splitter device can be installed for preparative chromatography;
9. Low detection limit, reaching pg level;
10. Use 24-bit AD converter, with higher dynamic range;

MAIN INDICATORS

Charged Aerosol Detector/ Electro spray Detector

1. Atomization method: FocusJet concentric flow design;
2. Mobile phase flow rate : 0.2-2mL/min;
3. Material: 316 stainless steel, peek , fused quartz, PTFE;
4. Digital data acquisition rate (maximum) : 100Hz ;
5. Digital noise filtering : fourth-order low-pass Bessel;
6. Optional analog signal output : 0-1V DC;
7. Evaporation temperature: 35 °C or 50 °C;
8. Preheating time : reach 35 °C<15min;
9. Gas pressure: inlet pressure 70-80psi (0.4-0.5MPa);
10. Gas consumption: 4L/min;
11. Gas pressure control: manual;
12. Control: PC and touch screen;

Nitrogen Generator (optional)

1. Nitrogen production principle: membrane separation;
2. Output flow: 5L/min;
3. Output pressure: 0.6MPa;
4. Nitrogen purity: 99.9%;
5. Dew point: -45 °C;

HPLC Servicing, Validation, Trainings and Preventive Maintenance :

HPLC Servicing :HPLC Servicing : We have team of service engineers who can attend to any make of HPLC promptly @the most affordable cost.

Trainings :We also take up preventive Maintenance to reduce downtime of HPLC's Trainings.

AMC's/CMC :AMC's/CMC :We offer user training both in-House and at customer sites on HPLC principles, operations, trouble-shooting.

Validations :Validations :We have protocols for carrying out periodic Validations as per GLP/GMP/USFDA norms.

Instruments :Instruments :We offer instruments/Renting Services Modules like pumps,detector etc. on Rent.



About Analytical Technologies

Analytical Technologies is synonymous for offering technologies for doing analysis and is the Fastest Growing Global Brand having presence in at least 96 countries across the global. Analytical Technologies Limited is an ISO:9001 Certified Company engaged in Designing, Manufacturing, Marketing & providing Services for the Analytical, Chromatography, Spectroscopy, Bio Technology, Bio Medical, Clinical Diagnostics, Material Science & General Laboratory Instrumentation. Analytical Technologies, India has across the Country operations with at least 4 Regional Offices, 6 Branch Offices & Service Centers. Distributors & Channel partners worldwide.

Our Products & Technologies



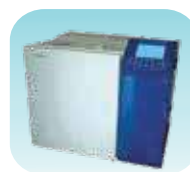
UV/VIS Spectro 2080+ Double Beam



Infra FTIR



Optima Gas Chromatograph 3007



Optima Gas Chromatograph 2979 Plus



Flash Chromatograph



Atomic Absorption Spectrophotometer



Liquid Particle Counter



Optical Emission Spectrophotometer



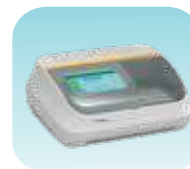
DSC/TGA



Semi Auto Bio Chemistry Analyzer



HEMA 2062 Hematology Analyzer



Micro Plate Reader/Washer



URINOVA 2800 Urine Analyzer



Total Organic Carbon 3800



Fully Automated CLIA



NOVA-2100 Chemistry Analyzer



PCR/Gradient PCR/ RTPCR



TOC Analyzer



Laser Particle Size Analyzer



Ion Chromatograph



Water purification system

Regulatory compliances



Corporate Social Responsibility

Analytical Foundation is a nonprofit organization (NGO) found for the purpose of:



Analytical Foundation

1. Research & Innovation Scientist's awards/QC Professional Award : Quality life is possible by innovation only and the innovation is possible by research only, hence ANALYTICAL FOUNDATION is committed to identify such personalities for their contributions across various field of Science and Technology and awarding them yearly. To participate for award, send us your details of research / testing / publication at Info@analyticalfoundation.org

2. Improving quality of life by offering YOGA Training courses, Work shops/Seminars etc.

3. ANALYTICAL FOUNDATION aims to DETOXYFY human minds,souls and body by means of yoga, Meditation, Ayurveda, Health Care, Awards, Media, Events, Camps etc.



HPLC Solutions MultipleLabs Analytical Bio-Med Analytical Distributors Analytical Foundation (Trust)

Corporate & Regd. Office:
Analytical House, # E67 & E68,
Ravi Park, Vasna Road, Baroda,
Gujarat 390 015. INDIA

T: +91 265 2253620
+91 265 2252839
+91 265 2252370
F: +91 265 2254395

E: info@hplctechnologies.com
info@multiplelabs.com
info@analyticalgroup.net

W. www.analyticalgroup.net
www.hplctechnologies.com
www.multiplelabs.com

Sales & Support Offices:
across the country :
Distributors & Channel
partners World Wide